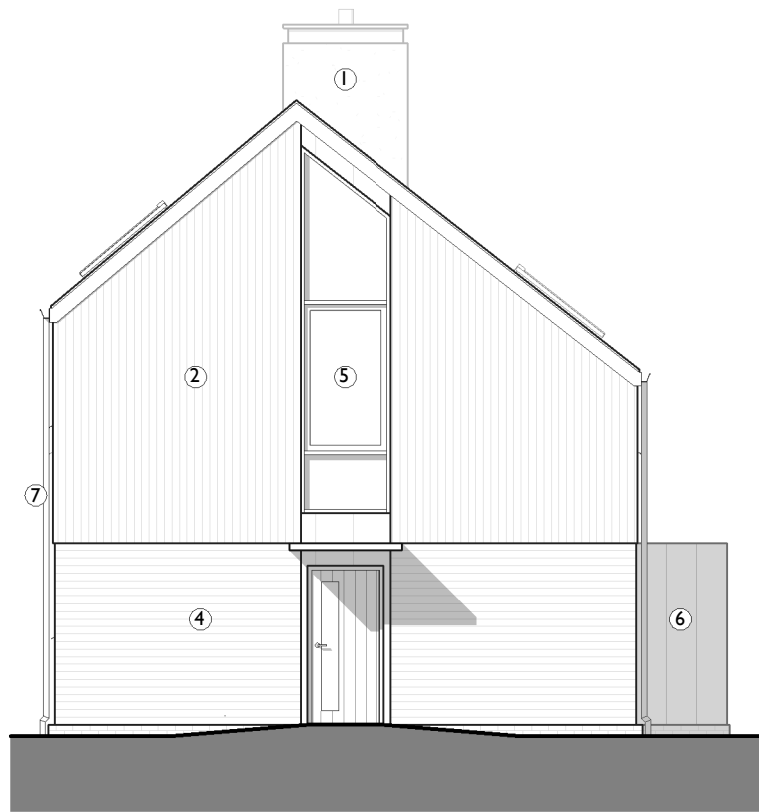


NOTE: THE PLANS AND ELEVATIONS ARE FOR ILLUSTRATIVE PURPOSES ONLY AND SUBJECT TO CONTRACT. ALL DIMENSIONS INDICATED ARE APPROXIMATE AND FOR USABLE SPACES. ANY FURNITURE AND APPLIANCES SHOWN ARE FOR ILLUSTRATIVE PURPOSES ONLY. THE PLANS, ELEVATIONS AND SPECIFICATION MAY BE SUBJECT TO CHANGE WITHOUT PRIOR NOTIFICATION.

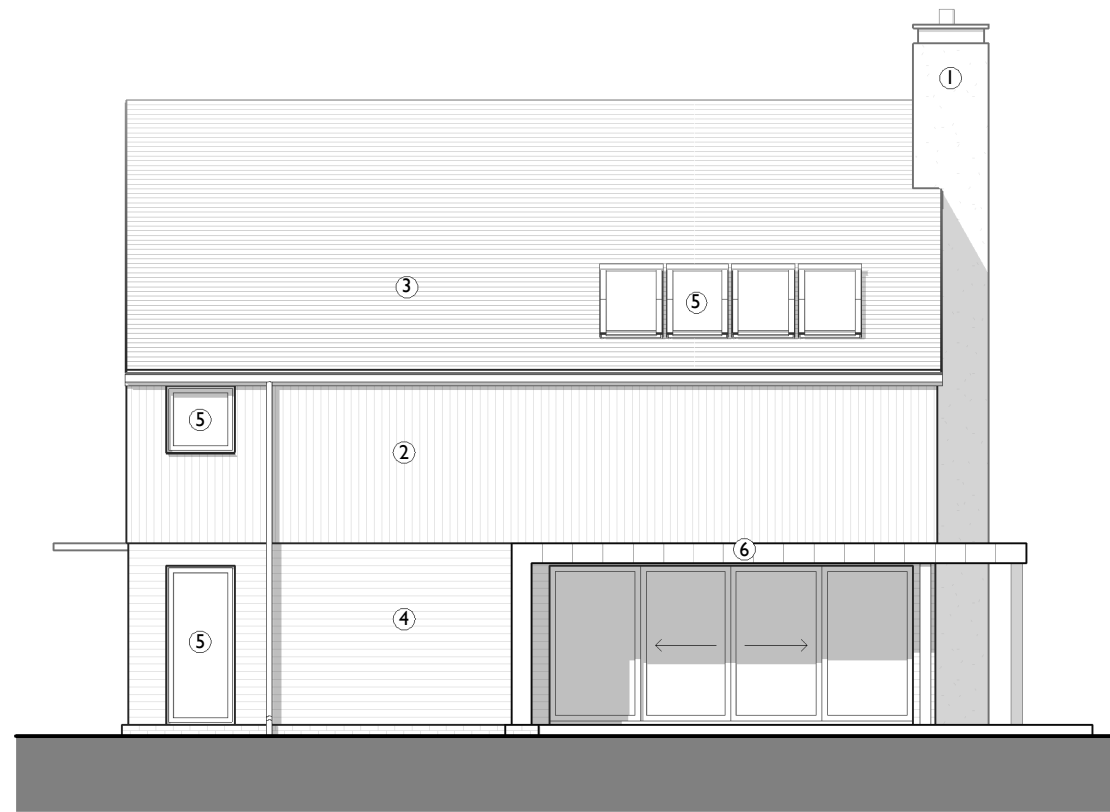
NOTE: CLADDING MATERIALS MAY BE SUBJECT TO PLANNING REQUIREMENTS

**MATERIALS:**

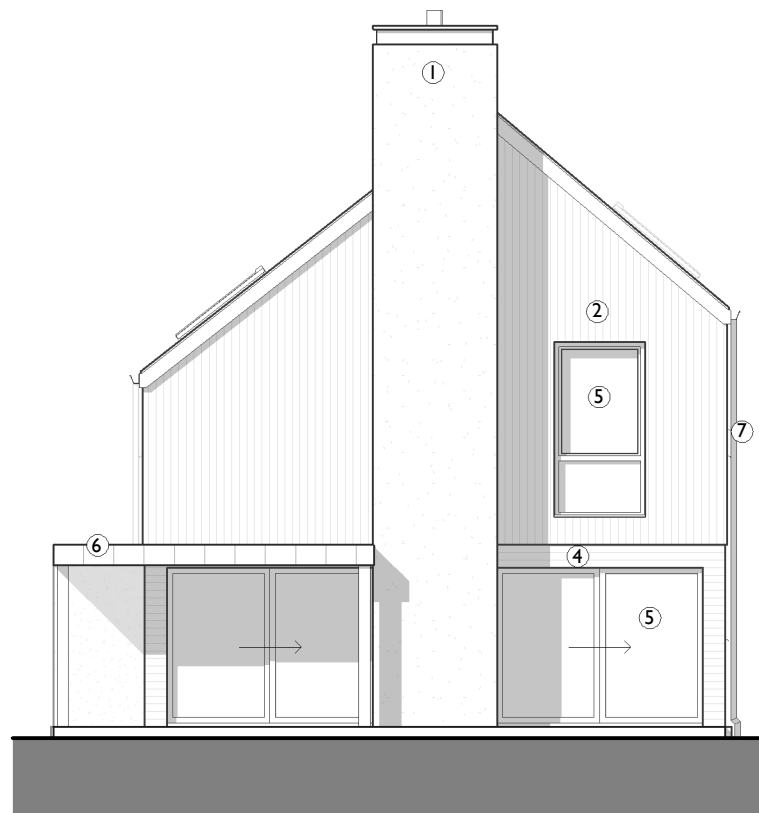
- ① Render
- ② Vertical Larch Cladding
- ③ Single Clay Tile Roof
- ④ Horizontal Larch Cladding
- ⑤ Aluminium Powdercoated Windows (Grey)
- ⑥ Zinc Profile
- ⑦ RWP



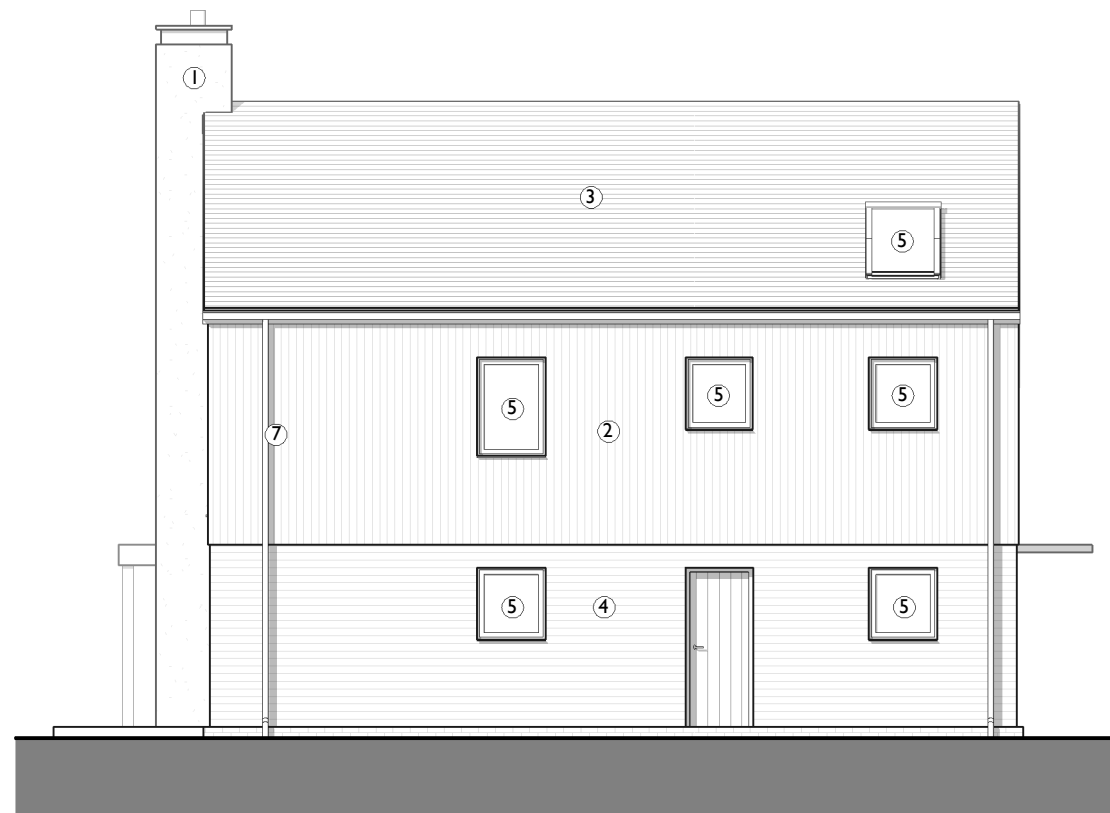
FRONT ELEVATION



SIDE ELEVATION



REAR ELEVATION



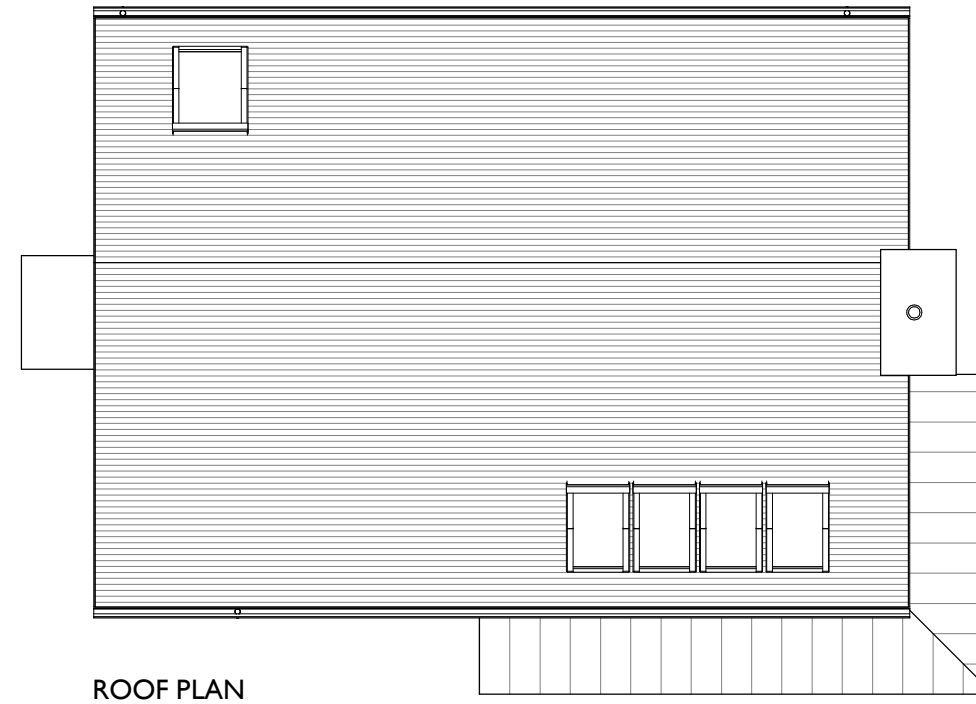
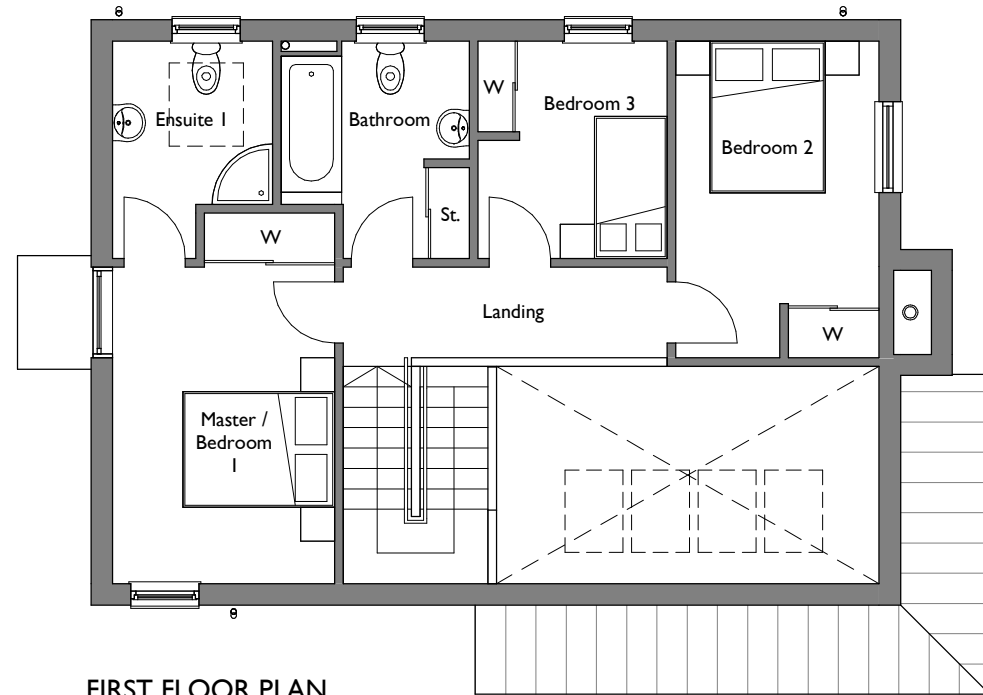
SIDE ELEVATION



**HABITAT FIRST**

Job Title		
SALES DRAWINGS		
Drawing Title		
LIGHTHOUSE GFL SALES ELEVATIONS		
Scale	Size	Date
1 : 100	A3	03.02.2021

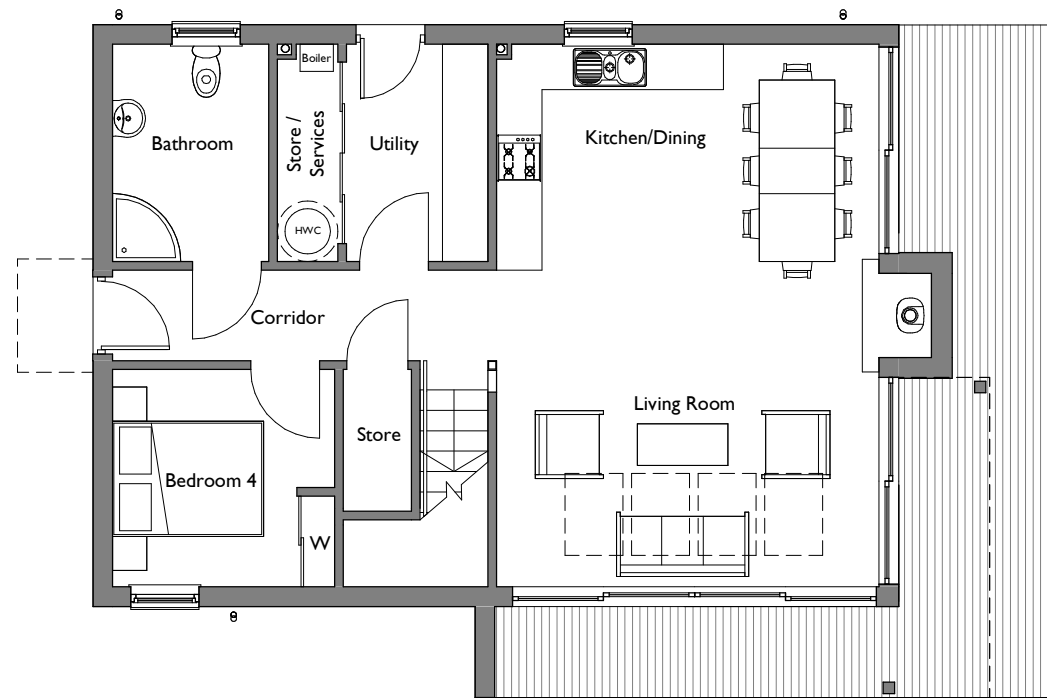
NOTE: THE PLANS AND ELEVATIONS ARE FOR ILLUSTRATIVE PURPOSES ONLY AND SUBJECT TO CONTRACT. ALL DIMENSIONS INDICATED ARE APPROXIMATE AND FOR USABLE SPACES. ANY FURNITURE AND APPLIANCES SHOWN ARE FOR ILLUSTRATIVE PURPOSES ONLY. THE PLANS, ELEVATIONS AND SPECIFICATION MAY BE SUBJECT TO CHANGE WITHOUT PRIOR NOTIFICATION.



	ROOM	m	ft
GROUND FLOOR	Utility	2.79 x 2.87	9'2" x 9'5"
	Kitchen	5.06 x 3.00	16'7" x 9'10"
	Living	5.06 x 4.18	16'7" x 13'9"
	Bedroom 4	2.94 x 2.87	9'8" x 9'5"
FIRST FLOOR	Bathroom	2.07 x 2.87	6'9" x 9'5"
	Bedroom 1	2.94 x 4.19	9'8" x 13'9"
	Ensuite 1	2.12 x 2.87	6'11" x 9'5"
	Bedroom 2	2.69 x 4.19	8'10" x 13'9"
	Bedroom 3	2.51 x 2.87	8'3" x 9'5"
	Bathroom	2.49 x 2.87	8'2" x 9'5"

GIA	INTERNAL		EXTERNAL	
	m <sup>2</sup>	ft <sup>2</sup>	m <sup>2</sup>	ft <sup>2</sup>
Ground Floor	72.7	783	23.8	256
First Floor	72.7	783	0	0
<b>TOTAL</b>	<b>145.4</b>	<b>1566</b>	<b>23.8</b>	<b>256</b>

Ground floor external decking may vary depending on plot



## HABITAT FIRST

Job Title	SALES DRAWINGS	
Drawing Title	LIGHTHOUSE GFL SALES PLANS	
Scale	Size	Date
1 : 100	A3	03.02.2021