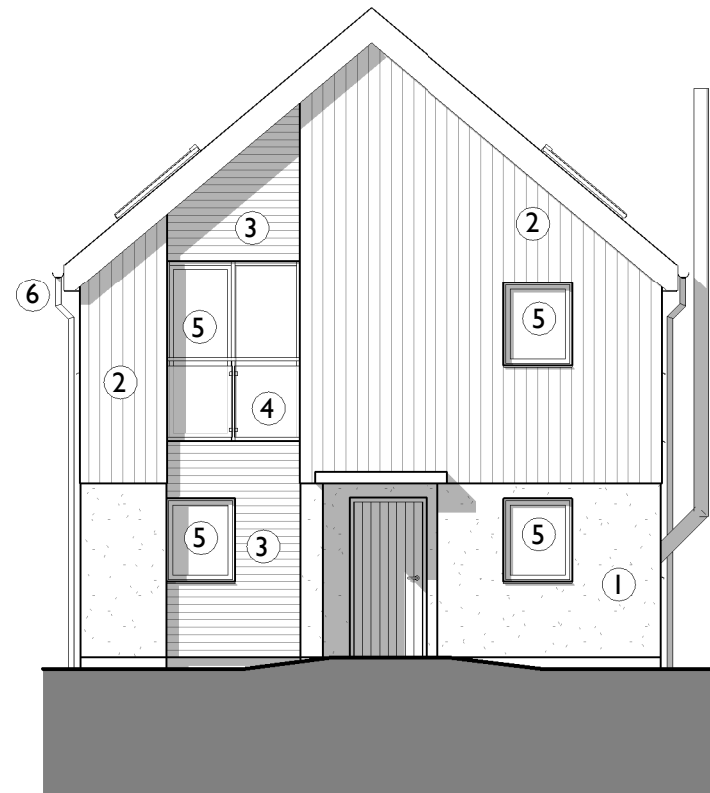


NOTE: THE PLANS AND ELEVATIONS ARE FOR ILLUSTRATIVE PURPOSES ONLY AND SUBJECT TO CONTRACT. ALL DIMENSIONS INDICATED ARE APPROXIMATE AND FOR USABLE SPACES. ANY FURNITURE AND APPLIANCES SHOWN ARE FOR ILLUSTRATIVE PURPOSES ONLY. THE PLANS, ELEVATIONS AND SPECIFICATION MAY BE SUBJECT TO CHANGE WITHOUT PRIOR

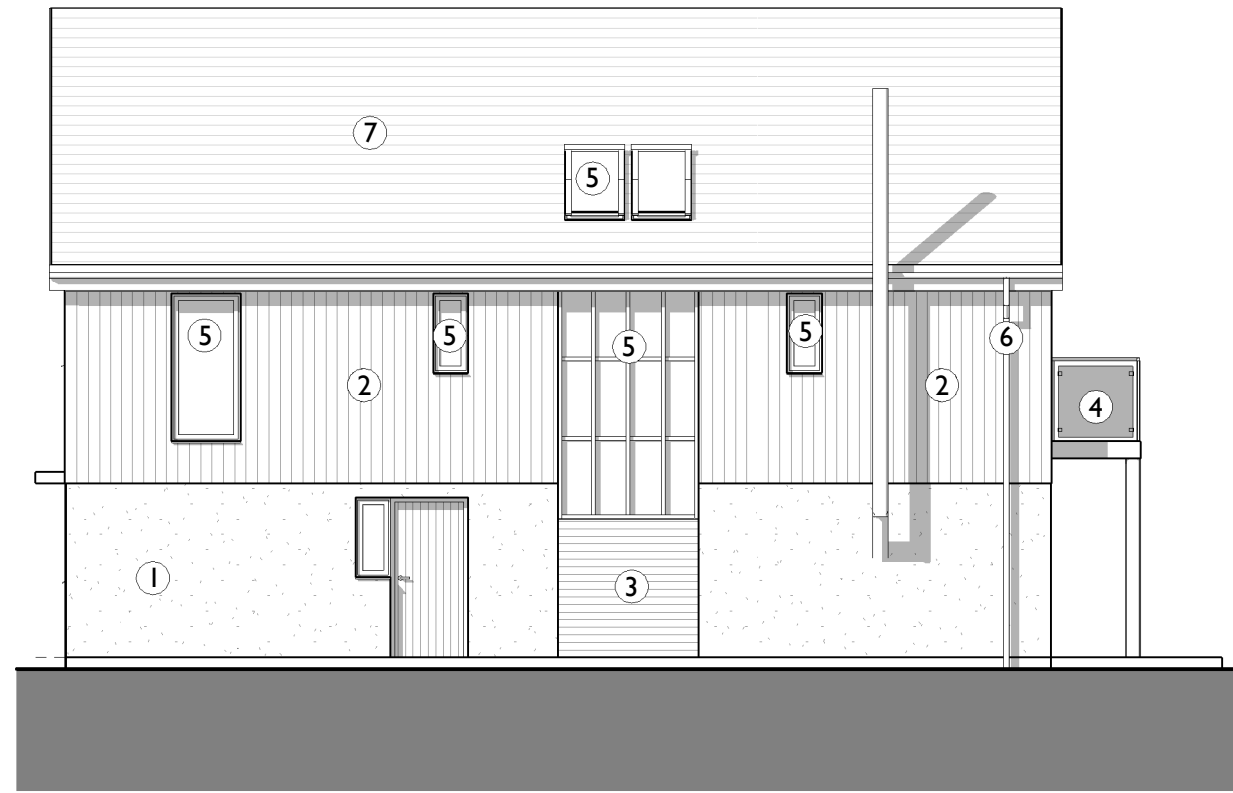
NOTE: CLADDING MATERIALS MAY BE SUBJECT TO PLANNING REQUIREMENTS

MATERIALS:

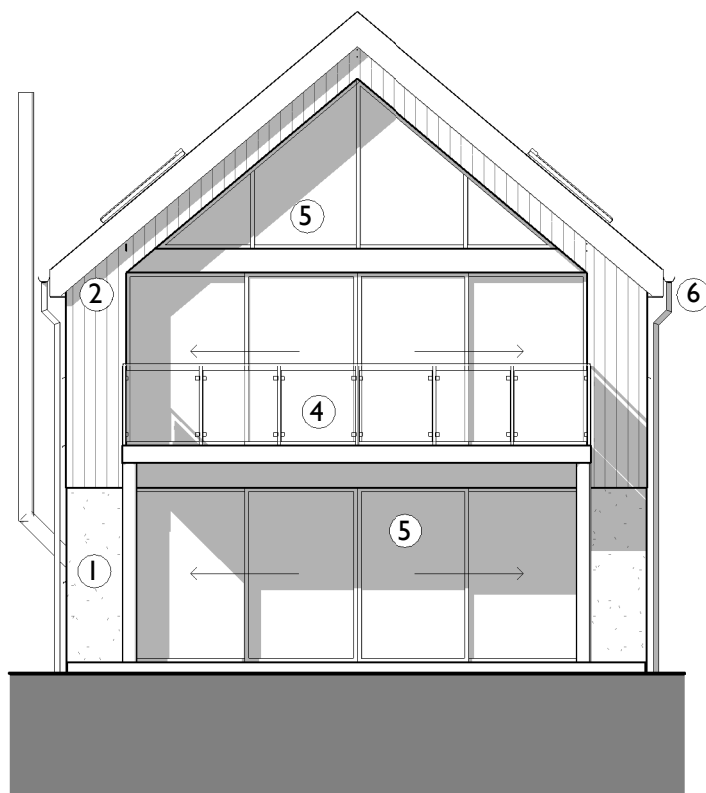
- ① Render
- ② Vertical Larch Cladding
- ③ Horizontal Larch Cladding
- ④ Glass Balustrade
- ⑤ Aluminium Powdercoated Windows (Grey)
- ⑥ Aluminium RWP
- ⑦ Spanish Slate Tiles



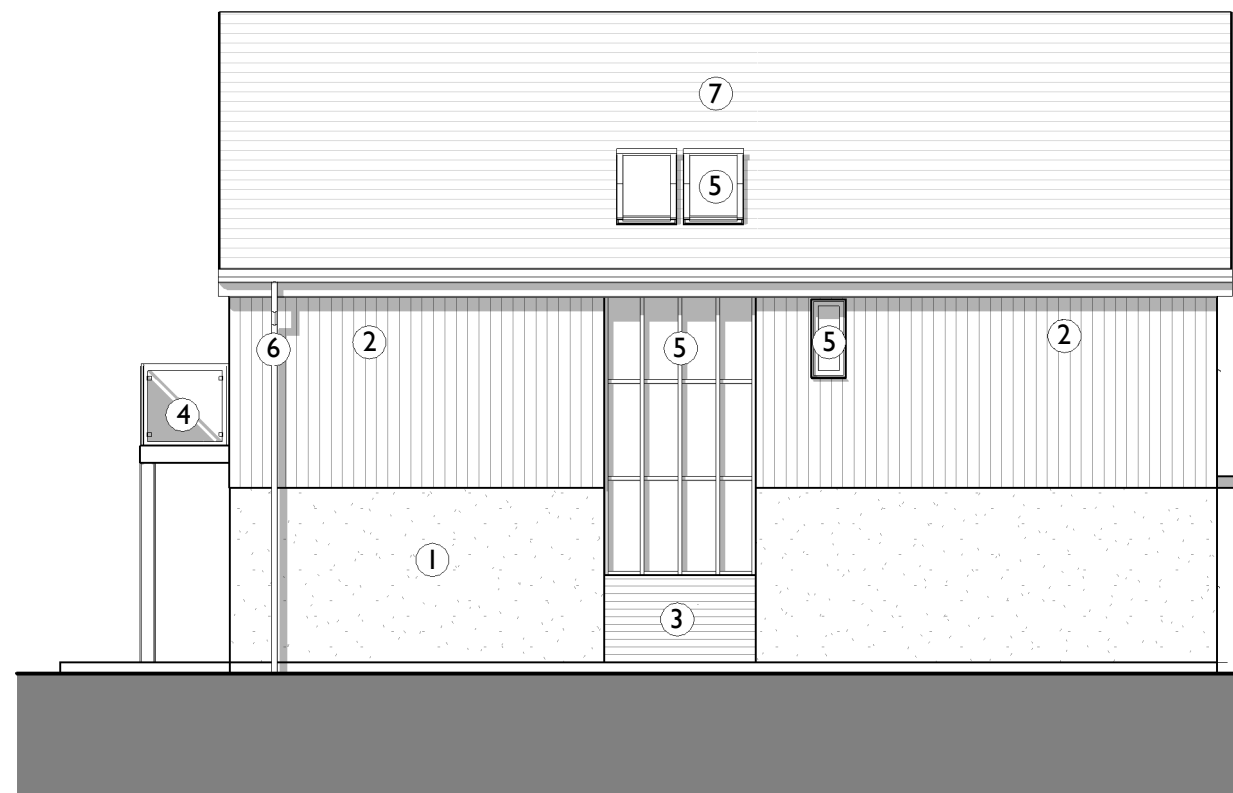
FRONT ELEVATION



SIDE ELEVATION



REAR ELEVATION



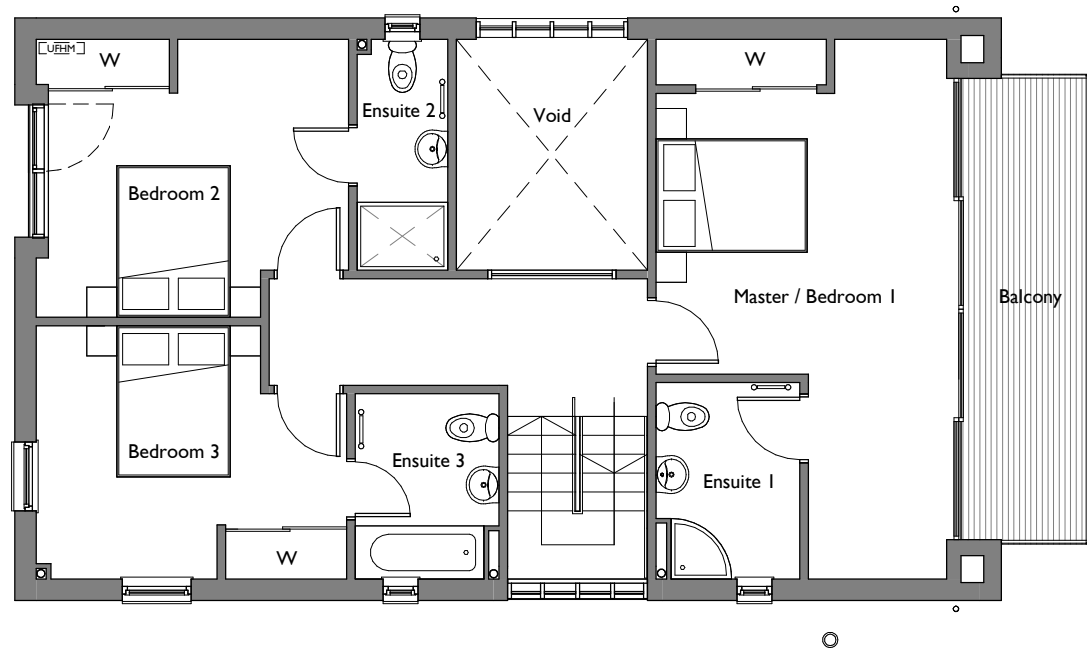
SIDE ELEVATION



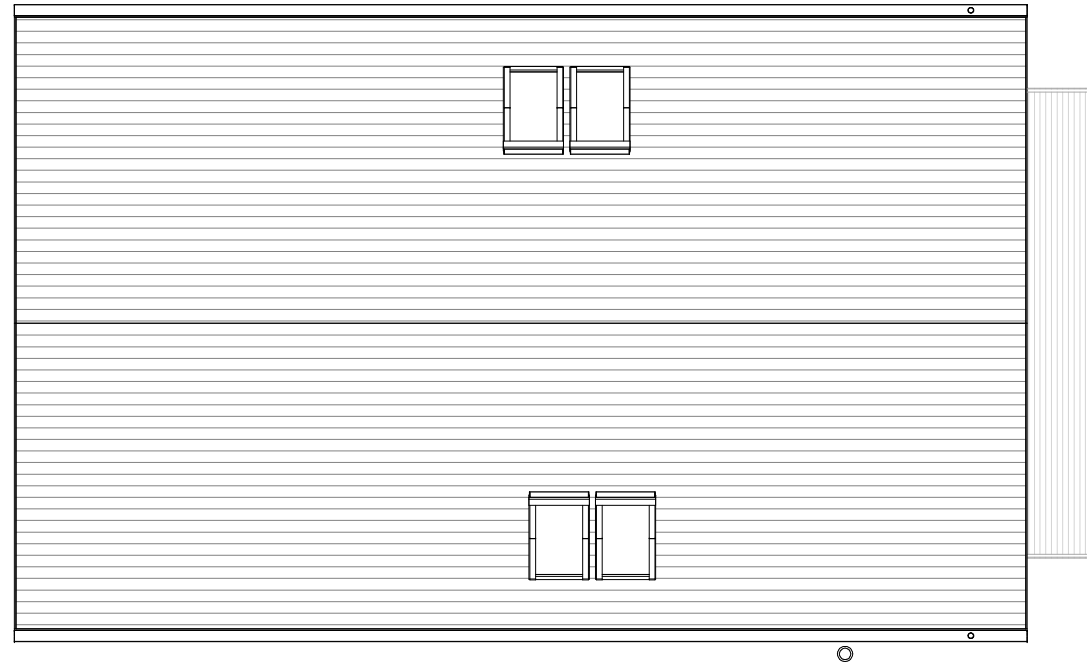
HABITAT FIRST

Job Title	SALES DRAWINGS	
Drawing Title	DORSET BARN GFL - 2-STOREY SALES ELEVATIONS	
Scale	Size	Date
1 : 100	A3	03.02.21

NOTE: THE PLANS AND ELEVATIONS ARE FOR ILLUSTRATIVE PURPOSES ONLY AND SUBJECT TO CONTRACT. ALL DIMENSIONS INDICATED ARE APPROXIMATE AND FOR USABLE SPACES. ANY FURNITURE AND APPLIANCES SHOWN ARE FOR ILLUSTRATIVE PURPOSES ONLY. THE PLANS, ELEVATIONS AND SPECIFICATION MAY BE SUBJECT TO CHANGE WITHOUT PRIOR



FIRST FLOOR PLAN

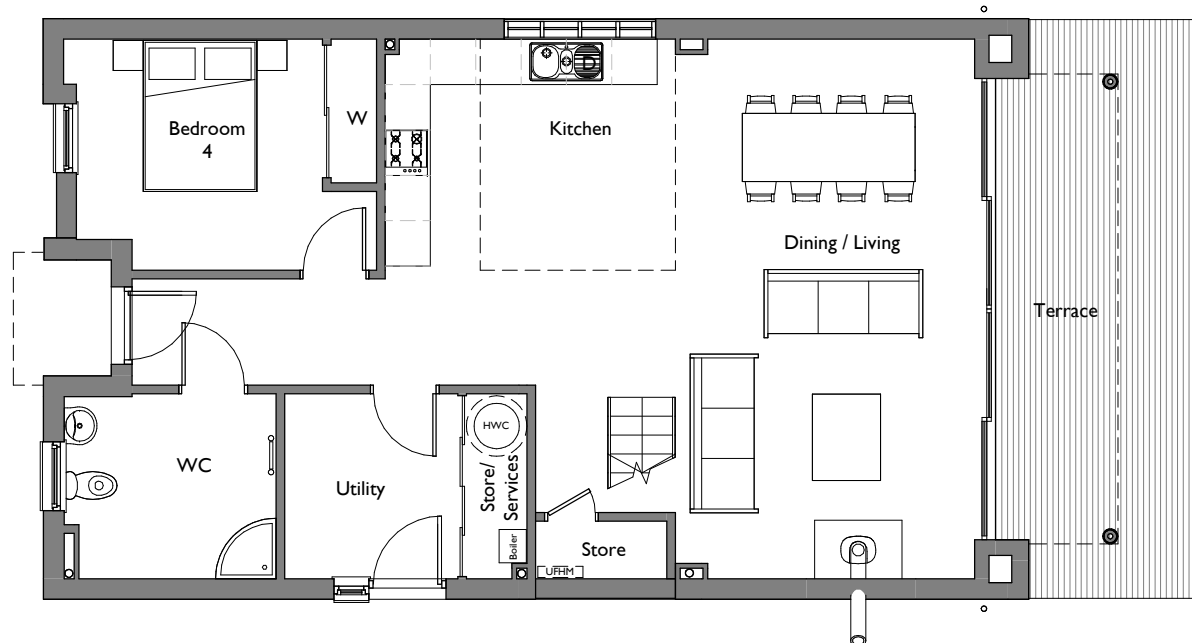


ROOF PLAN

	ROOM	m	ft
GRND FLOOR	Living/Dining	3.96 x 7.13	13' 0" x 23' 5"
	Kitchen	3.84 x 3.17	12' 7" x 10' 5"
	Bedroom 4	3.26 x 3.05	10' 8" x 10' 0"
	Utility	2.29 x 2.45	7' 6" x 8' 0"
	WC	2.80 x 2.45	9' 2" x 8' 0"
FIRST FLOOR	Bedroom 1	3.84 x 4.43	12' 7" x 14' 6"
	Bedroom 2	4.13 x 3.67	13' 7" x 12' 1"
	Bedroom 3	4.11 x 3.35	13' 6" x 11' 0"
	Bathroom	1.90 x 2.45	6' 3" x 8' 0"
	En-suite 1	1.90 x 2.60	6' 3" x 8' 6"
	En-suite 2	1.20 x 3.05	3' 11" x 10' 0"

GIA	INTERNAL		EXTERNAL	
	m ²	ft ²	m ²	ft ²
Ground Floor	83.75	901	19.9	215
First Floor	76.82	827	10.5	113
TOTAL	160.57	1728	30.4	328

Notes:
 • Ground floor external decking may vary depending on plot



GROUND FLOOR PLAN



HABITAT FIRST

Job Title	SALES DRAWINGS	
Drawing Title	DORSET BARN GFL - 2-STOREY SALES PLANS	
Scale	Size	Date
1 : 100	A3	03.02.21